

# DNNSmart Super Link User Manual

## Description:

This is an integration of all link types. It integrates 6 kinds of link types now.

## How to configure this module?

After you apply this module on the page, you can click Management Center button and enter management page.

## Example








 [Management Center](#) 

First of all, you need to enter “Choose Link Type” page and choose which one Link Type you want to use. Please click “Apply” button to choose it.

If you only purchase one Link Type, please disregard this step.

Current Link Type: **SL02\_CategoryLink**

Manage Link   Manage Category   Link Settings   Choose Link Type   Global Settings   Transfer

Preview	Link Type Name	Action
	SL01_AZLink	 <b>Apply</b>
Cathy(292)	A	
D	B	
Damien(494)	C	
Danny(236)	D	
E	E	
Energy(1189)	F	
Ebm(228)	G	
F	H	
Face(237)	#	
G		
		
	SL02_CategoryLink	 <b>Already Applied</b>
SK10051-Education(298)	AGRICULTURE EDUCATION	

Next, you need to enter "Manage Link" page. On this page, you can add, delete and edit Link. You can also view click report of each link.

Back

Current Link Type: **SL01\_AZLink**

Manage Link | Link Settings | Choose Link Type | Global Settings | Transfer | License

[Add New](#)

Title	Link	Category	ClickCount	NewWindow	LinkOrder	Action
google	http://www.google.com	Default	224	False	0	
Adam	http://www.Adam.com	Default	281	False	0	
Alex	http://www.Alex.com	Default	602	False	0	
Ali	http://www.Ali.com	Default	236	False	0	
Arthur	http://www.Arthur.com	Default	404	False	0	
Barry	http://www.google.com	Default	243	False	0	
Becky	http://Becky.com	Default	332	False	0	
Biff	http://Biff.com	Default	541	False	0	
Calista	http://Calista.com	Default	667	False	0	
Cathy	http://Cathy.com	Default	302	False	0	
damien	http://damien.com	Default	506	False	0	
danny	http://danny.com	Default	244	False	0	

If you use Link Type with Category feature, you can enter Manage Category to manage categories.

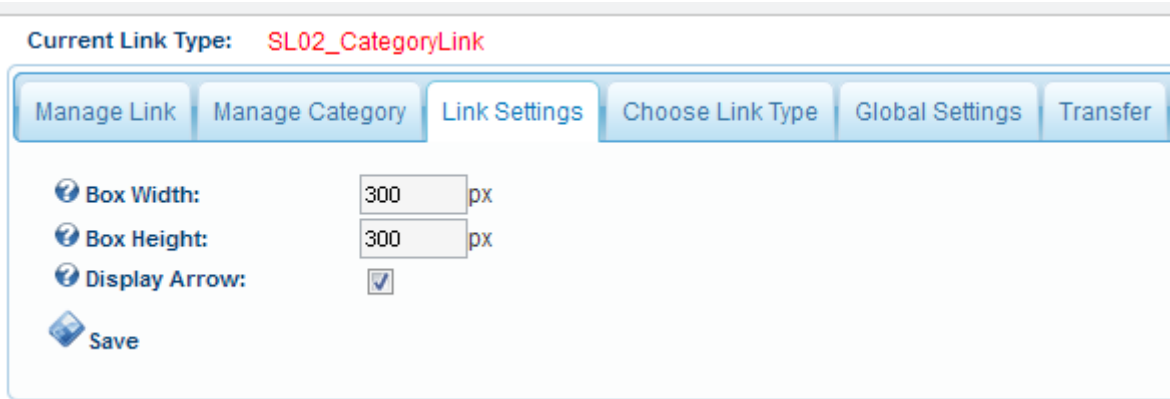
Current Link Type: **SL02\_CategoryLink**

Manage Link | **Manage Category** | Link Settings | Choose Link Type | Global Settings | Transfer

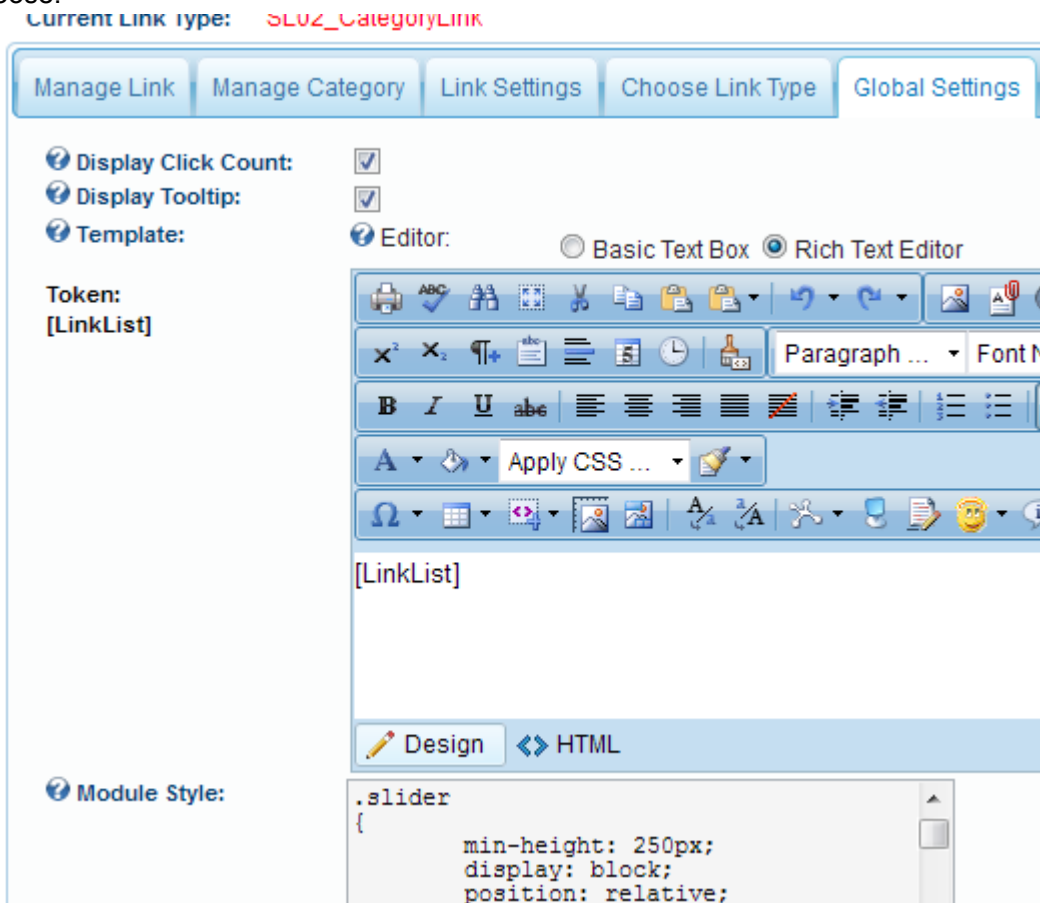
Category Name:  [Add](#)

Category Name	Action
Agriculture	
Education	
Holiday	
Politics	
Sports	

Please enter "Link Settings" page, then you can see some option settings of current Link Type. Options here will change according to your chosen Link Type.



On “Global Settings” page, you can use options here no matter which Link Types you choose.



On “Transfer” page, you can import or export module data.

Current Link Type: **SL02\_CategoryLink**

Manage Link	Manage Category	Link Settings	Choose Link Type	Global Settings	Transfer
-------------	-----------------	---------------	------------------	-----------------	----------

**Transfer Type:**  Export To Xml File  
 Import From Xml File

**Support:** [dnnsmart@gmail.com](mailto:dnnsmart@gmail.com)

**Our Product List:**

<http://store.dotnetnuke.com/vendor-profile/dnnsmart?r=095a842e6896481d8f10>